

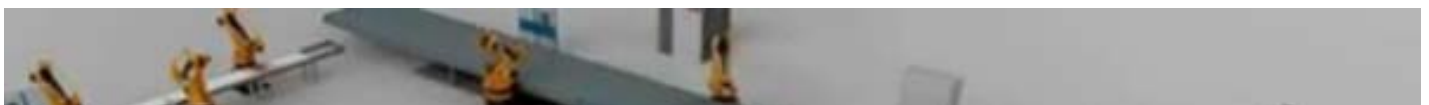
Cisco Industrial Ethernet 4000 Series Switches



[Data Sheets and Literature](#)

Highly scalable switches for industrial environments

Get highly scalable, easy-to-manage, and resilient switches with a comprehensive feature set. Our Industrial Ethernet (IE) 4000 Series switches provide superior, high-bandwidth switching (Layer 2) and proven Cisco IOS Software-based routing (Layer 3) capabilities for industrial environments.





Scalability for industrial networks

Learn how Cisco IE 4000 switches help prepare industrial networks for the future. (3:16 min)

Features and capabilities

IE 4000 Series switches are built to withstand extreme environments while adhering to overall IT network design, compliance, and performance requirements. They deliver highly secure access and industry-leading convergence using Cisco Resilient Ethernet Protocol (REP), and they support industrial protocols.

The 4000 Series is ideal for industrial Ethernet vertical industries applications where hardened products are required. That includes:

- Factory automation
- Power utility substations
- Intelligent transportation systems
- Oil and gas field sites
- City surveillance programs
- Mining

With improved overall performance, greater bandwidth, a more comprehensive feature set, and

enhanced hardware, IE 4000 Series switches offer:

- Extended Enterprise capability with Cisco DNA Center management and support for the Software-Defined Access Extension for IoT
- Superior bandwidth and capacity: 40-Gbps nonblocking switching capacity with up to 20 Gigabit Ethernet ports per switch
- High-density, industrial Power over Ethernet (PoE) or PoE Plus support for in-line power to up to eight devices
- Cisco IOS Software features for smooth IT integration and policy consistency
- Robust resiliency and enhanced security
- A simple, pay-as-you-go software upgrade path with a universal software image

The IE 4000 Series can be easily managed by **Cisco Industrial Network Director**, a network management system purpose built for industrial applications that uses the complete capabilities of the Cisco Industrial Ethernet product family to make the network easily accessible to non-IT operations personnel.

Specifications at a glance

Port configuration	Up to 20 ports with compact form factor
Uplinks	4 Gigabit Ethernet (GE) combination (supporting both copper and fiber physical ports)
Downlinks	Multiple options: Fast Ethernet (FE) and GE, copper and fiber, PoE, and PoE+; up to 16 x GE capacity
Manageability	Swappable SD flash card (for configuration storage), mini USB connector, RS-232 console port
Industrial Ethernet protocols supported	Cisco Common Industrial Protocol (CIP), EtherNet/IP, PROFINETv2 and more

Cisco Services

Build a foundation for extraordinary outcomes with a network that predicts, adapts, and protects your business.

[See all services for switching](#)

Additional resources

Data Sheets and Literature

[Bulletins](#)

[Data Sheets](#)

[Sales Resources](#)

Contact Cisco

[Chat Now](#)

[Get a call from Presales](#)

[Product / Technical Support](#)

[Find a Local Reseller](#)

[Training & Certification](#)

[Other Countries](#)

Call 1 800 553 6387

US/CAN | 5am-5pm PT

Support & Downloads

All support information for

Cisco Industrial Ethernet 4000 Series Switches

[Download Software for this Product](#)

Like 7

Tweet

Share

G+

Related Links

[Cisco Industrial Ethernet Switches](#)

[Cisco Industrial Network Director](#)

[Cisco Internet of Things](#)

[Cisco Industrial Solutions](#)

[News & Events](#)

[ABOUT US](#)

[CONTACT US](#)

[WORK WITH US](#)

[CISCO SITES](#)

[Contacts](#)

[Feedback](#)

[Help](#)

[Site Map](#)

[Terms & Conditions](#)

[Privacy](#)

[Cookies](#)

[Trademarks](#)
